

## Supplementary data

Table 1. Demographic characteristics. Values are count (%) unless otherwise specified

Factor	Cohabiting status			Education			Income			Liquid assets		
	Alone	Cohabiting	Other	Low	Medium	High	Low	Medium	High	Low	Medium	High
Sex												
Female	24,650 (74)	30,051 (47)	3,596 (50)	26,014 (60)	17,840 (48)	9,333 (59)	21,827 (68)	19,770 (56)	16,656 (46)	20,620 (67)	18,116 (53)	17,750 (49)
Male	8,455 (26)	33,608 (53)	3,544 (50)	17,246 (40)	18,978 (52)	6,385 (41)	10,196 (32)	15,685 (44)	19,688 (54)	10,003 (33)	15,922 (47)	18,149 (51)
Age												
Mean (SD)	73 (10)	68 (9)	67 (9)	71 (9)	67 (9)	68 (9)	74 (8)	71 (8)	65 (9)	71 (10)	69 (9)	69 (9)
45–55	1,842 (6)	6,198 (10)	965 (14)	2,556 (6)	4,585 (12)	1,722 (11)	820 (3)	1,717 (5)	6,447 (18)	2,231 (7)	3,128 (9)	3,257 (9)
56–65	5,408 (16)	18,189 (29)	2,483 (35)	9,407 (22)	11,494 (31)	4,830 (31)	4,479 (14)	8,235 (23)	13,344 (37)	6,126 (20)	9,099 (27)	10,170 (28)
66–75	11,916 (36)	26,659 (42)	2,417 (34)	19,380 (45)	14,476 (39)	6,360 (40)	12,692 (40)	15,945 (45)	12,332 (34)	11,783 (38)	13,205 (39)	14,966 (42)
76–85	11,643 (35)	11,732 (18)	1,138 (16)	10,975 (25)	5,830 (16)	2,592 (16)	12,039 (38)	8,566 (24)	3,894 (11)	9,064 (30)	7,651 (22)	6,767 (19)
>85	2,296 (7)	881 (1)	137 (2)	942 (2)	433 (1)	214 (1)	1,993 (6)	992 (3)	327 (1)	1,419 (5)	955 (3)	739 (2)
Charlson comorbidity score												
Low	25,230 (76)	51,408 (81)	5,832 (82)	33,720 (78)	29,467 (80)	12,907 (82)	24,507 (77)	27,582 (78)	30,312 (83)	23,082 (75)	27,468 (81)	29,482 (82)
Medium	6,646 (20)	10,438 (16)	1,131 (16)	8,040 (19)	6,226 (17)	2,425 (15)	6,354 (20)	6,645 (19)	5,206 (14)	6,311 (21)	5,658 (17)	5,533 (15)
High	1,229 (4)	1,813 (3)	177 (2)	1,500 (3)	1,125 (3)	386 (2)	1,162 (4)	1,228 (3)	826 (2)	1,230 (4)	912 (3)	884 (2)
Fixation technique												
Cemented	11,235 (34)	15,653 (25)	1,873 (26)	14,383 (33)	6,709 (18)	2,547 (16)	14,863 (47)	9,652 (27)	4,231 (12)	10,553 (35)	10,604 (31)	6,493 (18)
Uncemented	13,544 (41)	35,602 (56)	3,888 (55)	18,863 (44)	23,051 (63)	10,143 (65)	9,087 (28)	17,573 (50)	26,323 (73)	12,531 (41)	16,303 (48)	22,731 (63)
Hybrid	8,026 (24)	11,837 (19)	1,326 (19)	9,620 (22)	6,740 (18)	2,883 (18)	7,794 (24)	7,888 (22)	5,494 (15)	7,256 (24)	6,820 (20)	6,380 (18)
Other	175 (1)	337 (1)	31 (0)	231 (1)	196 (1)	95 (1)	155 (0)	196 (1)	189 (1)	141 (0)	182 (1)	200 (1)
Missing	125 (0)	230 (0)	22 (0)	163 (0)	122 (0)	50 (0)	124 (0)	146 (0)	107 (0)	142 (0)	129 (0)	95 (0)
Head size, mm												
≤ 32	21,553 (69)	36,406 (60)	4,205 (64)	28,769 (71)	19,828 (56)	7,868 (52)	22,989 (81)	22,449 (66)	16,681 (47)	19,931 (71)	21,490 (68)	18,655 (53)
> 32	9,614 (31)	23,890 (40)	2,412 (36)	12,030 (29)	15,873 (44)	7,406 (48)	5,549 (19)	11,405 (34)	18,927 (53)	8,100 (29)	10,153 (32)	16,617 (47)
Missing	1,938 (6)	3,363 (5)	523 (7)	2,461 (6)	1,117 (3)	444 (3)	3,485 (11)	1,601 (5)	736 (2)	2,592 (8)	2,395 (7)	627 (2)
Surgery time, min												
≤ 60	15,462 (47)	33,270 (52)	3,418 (48)	19,203 (44)	21,157 (58)	9,709 (62)	11,222 (35)	17,624 (50)	23,251 (64)	13,027 (43)	15,488 (46)	22,096 (62)
> 61	17,581 (53)	30,241 (48)	3,706 (52)	23,964 (56)	15,583 (42)	5,975 (38)	20,727 (65)	17,751 (50)	13,021 (36)	17,523 (57)	18,469 (54)	13,738 (38)
Missing	62 (0)	148 (0)	16 (0)	93 (0)	78 (0)	34 (0)	74 (0)	80 (0)	72 (0)	73 (0)	81 (0)	65 (0)

**Table 2. Cumulative incidence (%) of revision and mortality at 365 days with 95% confidence intervals**

Factor	Any	Revision cause			Mortality
		Infection	Fracture	Dislocation	
Cohabiting status					
Alone	2.2 (2.1–2.4)	0.6 (0.5–0.6)	0.4 (0.4–0.5)	0.8 (0.7–0.9)	3.0 (2.8–3.2)
Cohabitant	1.9 (1.8–2.1)	0.6 (0.5–0.6)	0.3 (0.3–0.4)	0.6 (0.6–0.7)	1.8 (1.7–1.9)
Education					
Low	2.0 (1.9–2.1)	0.6 (0.5–0.6)	0.3 (0.3–0.4)	0.7 (0.6–0.8)	2.4 (2.3–2.5)
Medium	2.1 (2.0–2.3)	0.5 (0.5–0.6)	0.5 (0.4–0.5)	0.7 (0.6–0.8)	1.6 (1.5–1.8)
High	2.1 (1.9–2.3)	0.5 (0.4–0.6)	0.5 (0.3–0.6)	0.6 (0.5–0.8)	1.4 (1.2–1.6)
Income					
Low	1.9 (1.7–2.0)	0.5 (0.4–0.6)	0.3 (0.3–0.4)	0.8 (0.7–0.9)	3.9 (3.7–4.1)
Medium	2.1 (2.0–2.3)	0.6 (0.5–0.7)	0.4 (0.3–0.4)	0.7 (0.6–0.8)	1.9 (1.7–2.0)
High	2.1 (2.0–2.3)	0.6 (0.5–0.6)	0.4 (0.4–0.5)	0.6 (0.5–0.6)	1.1 (1.0–1.2)
Liquid assets					
Low	2.3 (2.1–2.4)	0.6 (0.5–0.7)	0.4 (0.4–0.5)	0.8 (0.7–0.9)	1.9 (1.8–2.1)
Medium	1.8 (1.7–2.0)	0.5 (0.4–0.6)	0.3 (0.3–0.4)	0.6 (0.5–0.7)	1.4 (1.2–1.5)
High	2.0 (1.8–2.1)	0.5 (0.5–0.6)	0.4 (0.3–0.4)	0.6 (0.5–0.7)	0.8 (0.7–0.9)

**Table 3. Hazard ratio (HR) and adjusted HR (aHR) with 95% CI for any revision at 90 and 365 days**

Any revision	Short: 0–90 days				Long: 0–365 days			
	Events	Person-years	HR (95% CI)	aHR (95% CI)	Events	Person-years	HR (95% CI)	aHR (95% CI)
Cohabiting status								
Alone	511	7,894	1.3 (1.1–1.4)	1.3 (1.1–1.4)	728	37,878	1.2 (1.1–1.3)	1.2 (1.1–1.3)
Cohabitant	768	15,241	1 (ref)	1 (ref)	1211	73,423	1 (ref)	1 (ref)
Education								
Low	557	10,384	0.9 (0.8–1.1)	1.1 (0.9–1.3)	850	50,386	0.9 (0.8–1.1)	1.1 (0.9–1.2)
Medium	504	8,781	1.0 (0.9–1.2)	1.0 (0.9–1.2)	769	41,920	1.0 (0.9–1.1)	1.0 (0.9–1.2)
High	213	3,733	1 (ref)	1 (ref)	323	17,695	1 (ref)	1 (ref)
Income, age < 65								
Low	79	1,091	1.7 (1.3–2.2)	2.0 (1.4–2.8)	103	5,379	1.2 (1–1.5)	1.5 (1.1–2)
Medium	101	2,095	1.1 (0.9–1.4)	1.3 (1–1.7)	166	10,335	1.0 (0.8–1.2)	1.2 (1–1.5)
High	188	4,371	1 (ref)	1 (ref)	330	20,903	1 (ref)	1 (ref)
Income, age ≥ 65								
Low	329	6,605	0.7 (0.6–0.9)	1.0 (0.8–1.2)	496	32,098	0.8 (0.7–0.9)	0.9 (0.8–1.1)
Medium	367	6,413	0.9 (0.7–1)	0.9 (0.8–1.1)	571	30,875	0.9 (0.8–1)	1.0 (0.9–1.2)
High	285	4,248	1 (ref)	1 (ref)	411	19,809	1 (ref)	1 (ref)
Liquid assets, age < 65								
Low	115	1,803	1.5 (1.2–1.9)	1.2 (0.9–1.7)	174	8,718	1.4 (1.1–1.7)	1.3 (1–1.6)
Medium	107	2,650	1.0 (0.7–1.2)	1.0 (0.8–1.4)	185	12,964	1.0 (0.8–1.2)	1.1 (0.9–1.3)
High	122	2,890	1 (ref)	1 (ref)	204	13,955	1 (ref)	1 (ref)
Liquid assets, age ≥ 65								
Low	344	5,574	1.1 (0.9–1.3)	1.3 (1.1–1.5)	503	26,935	1.1 (0.9–1.2)	1.2 (1–1.4)
Medium	266	5,557	0.9 (0.7–1)	1.1 (0.9–1.3)	425	26,908	0.9 (0.8–1)	1.0 (0.9–1.2)
High	319	5,692	1 (ref)	1 (ref)	483	27,129	1 (ref)	1 (ref)

ref = reference.

Table 4. Hazard ratio (HR) and adjusted HR (aHR) with 95% CI for revision due to infection, fracture, and dislocation at 90 and 365 days

	Short: 0–90 days		Long: 0–365 days	
	HR (95% CI)	aHR (95% CI)	HR (95% CI)	aHR (95% CI)
<b>Revision cause – infection</b>				
Cohabiting status				
Alone	1.2 (1.0–1.5)	1.3 (1.1–1.7)	1.0 (1.0–1.0)	1.1 (1.0–1.4)
Cohabitant	1 (ref)	1 (ref)	1 (ref)	1 (ref)
Education				
Low	1.1 (0.8–1.5)	1.3 (1.0–1.7)	1.2 (0.9–1.5)	1.3 (1.0–1.7)
Medium	1.1 (0.8–1.5)	1.1 (0.8–1.5)	1.1 (0.8–1.4)	1.0 (0.8–1.4)
High	1 (ref)	1 (ref)	1 (ref)	1 (ref)
Income, age < 65				
Low	1.4 (0.8–2.4)	2.3 (1.1–4.5)	1.1 (0.7–1.8)	1.9 (1.0–3.5)
Medium	1.2 (0.8–1.9)	1.6 (0.9–2.7)	1.2 (0.8–1.7)	1.6 (1.0–2.5)
High	1 (ref)	1 (ref)	1 (ref)	1 (ref)
Income, age ≥ 65				
Low	0.7 (0.5–0.9)	1.0 (0.7–1.5)	0.8 (0.6–1.0)	1.1 (0.8–1.5)
Medium	0.9 (0.7–1.2)	1.0 (0.7–1.3)	0.7 (0.7–1.1)	1.0 (0.8–1.3)
High	1 (ref)	1 (ref)	1 (ref)	1 (ref)
Liquid assets, age < 65				
Low	1.8 (1.1–2.9)	1.6 (0.9–2.9)	1.5 (1.0–2.3)	1.4 (0.9–2.4)
Medium	1.1 (0.7–1.8)	1.2 (0.7–2.0)	1.0 (0.7–1.6)	1.2 (0.8–1.8)
High	1 (ref)	1 (ref)	1 (ref)	1 (ref)
Liquid assets, age ≥ 65				
Low	1.1 (0.8–1.4)	1.3 (1.0–1.8)	1.0 (0.8–1.3)	1.2 (0.9–1.6)
Medium	0.8 (0.6–1.1)	0.9 (0.7–1.3)	0.9 (0.7–1.1)	1.0 (0.8–1.3)
High	1 (ref)	1 (ref)	1 (ref)	1 (ref)
<b>Revision cause – fracture</b>				
Cohabiting status				
Alone	1.4 (1.1–1.8)	1.3 (1.0–1.7)	1.3 (1.0–1.6)	1.2 (1.0–1.6)
Cohabitant	1 (ref)	1 (ref)	1 (ref)	1 (ref)
Education				
Low	0.8 (0.6–1.1)	1.2 (0.9–1.7)	0.7 (0.6–1.0)	1.1 (0.8–1.4)
Medium	1.1 (0.8–1.5)	1.2 (0.9–1.7)	1.0 (0.8–1.4)	1.2 (0.9–1.6)
High	1 (ref)	1 (ref)	1 (ref)	1 (ref)
Income, age < 65				
Low	1.8 (1.1–2.9)	2.1 (1.1–4.1)	1.5 (0.9–2.4)	1.8 (1.0–3.5)
Medium	1.0 (0.6–1.6)	1.0 (0.6–1.8)	1.0 (0.6–1.5)	1.1 (0.6–1.8)
High	1 (ref)	1 (ref)	1 (ref)	1 (ref)
Income, age ≥ 65				
Low	0.5 (0.4–0.7)	0.9 (0.6–1.4)	0.6 (0.4–0.8)	1.0 (0.7–1.5)
Medium	0.6 (0.5–0.9)	0.8 (0.6–1.1)	0.7 (0.6–1.0)	1.0 (0.7–1.3)
High	1 (ref)	1 (ref)	1 (ref)	1 (ref)
Liquid assets, age < 65				
Low	1.8 (1.1–2.8)	1.5 (0.9–2.8)	1.7 (1.1–2.7)	1.7 (1.0–2.9)
Medium	0.9 (0.6–1.5)	1.2 (0.7–2.0)	1.0 (0.6–1.6)	1.3 (0.8–2.1)
High	1 (ref)	1 (ref)	1 (ref)	1 (ref)
Liquid assets, age ≥ 65				
Low	1.0 (0.7–1.4)	1.3 (0.9–1.8)	1.0 (0.7–1.3)	1.3 (0.9–1.8)
Medium	0.8 (0.5–1.0)	1.2 (0.9–1.8)	0.8 (0.6–1.1)	1.3 (0.9–1.7)
High	1 (ref)	1 (ref)	1 (ref)	1 (ref)
<b>Revision cause – dislocation</b>				
Cohabiting status				
Alone	1.2 (1.0–1.5)	1.2 (1.0–1.5)	1.3 (1.1–1.6)	1.3 (1.1–1.5)
Cohabitant	1 (ref)	1 (ref)	1 (ref)	1 (ref)
Education				
Low	1.1 (0.8–1.4)	1.0 (0.7–1.3)	1.1 (0.8–1.3)	1.0 (0.8–1.2)
Medium	1.0 (0.8–1.4)	1.0 (0.7–1.3)	1.0 (0.8–1.3)	1.0 (0.8–1.3)
High	1 (ref)	1 (ref)	1 (ref)	1 (ref)
Income, age < 65				
Low	2.6 (1.6–4.0)	2.0 (1.1–3.8)	2.2 (1.5–3.2)	1.8 (1.1–3.0)
Medium	1.1 (0.7–1.7)	1.0 (0.6–1.8)	1.5 (1.0–2.1)	1.3 (0.9–2.0)
High	1 (ref)	1 (ref)	1 (ref)	1 (ref)
Income, age ≥ 65				
Low	1.1 (0.8–1.4)	1.1 (0.8–1.5)	1.1 (0.8–1.3)	0.9 (0.7–1.3)
Medium	1.0 (0.8–1.3)	1.0 (0.7–1.3)	1.1 (0.8–1.3)	1.0 (0.8–1.3)
High	1 (ref)	1 (ref)	1 (ref)	1 (ref)
Liquid assets, age < 65				
Low	1.4 (0.8–2.2)	0.9 (0.5–1.6)	1.7 (1.1–2.5)	1.1 (0.7–1.8)
Medium	1.1 (0.7–1.7)	0.9 (0.5–1.4)	1.2 (0.8–1.8)	1.0 (0.7–1.6)
High	1 (ref)	1 (ref)	1 (ref)	1 (ref)
Liquid assets, age ≥ 65				
Low	1.2 (1.0–1.6)	1.3 (1.0–1.7)	1.2 (1.0–1.5)	1.2 (1.0–1.6)
Medium	1.0 (0.7–1.3)	1.0 (0.7–1.3)	1.0 (0.8–1.2)	0.9 (0.7–1.2)
High	1 (ref)	1 (ref)	1 (ref)	1 (ref)

Table 5. Hazard ratio (HR) and adjusted HR (aHR) with 95% CI for any revision at 90 and 365 days in the years 1995–2005

Any revision	Short: 0–90 days				Long: 0–365 days			
	Events	Person-years	HR (95% CI)	aHR (95% CI)	Events	Person-years	HR (95% CI)	aHR (95% CI)
Cohabiting status								
Alone	108	3,214	1.2 (0.9–1.5)	1.3 (1.0–1.7)	185	15,954	1.1 (0.9–1.3)	1.1 (0.9–1.4)
Cohabitant	161	5,615	1 (ref)	1 (ref)	304	28,030	1 (ref)	1 (ref)
Education								
Low	132	4,467	0.9 (0.6–1.3)	1.0 (0.7–1.4)	244	22,265	0.9 (0.7–1.2)	1.0 (0.7–1.3)
Medium	79	2,536	0.9 (0.6–1.4)	0.9 (0.6–1.4)	141	12,674	0.9 (0.7–1.2)	0.9 (0.7–1.2)
High	32	968	1 (ref)	1 (ref)	59	4,836	1 (ref)	1 (ref)
Income, age < 65								
Low	30	675	1.5 (0.9–2.4)	1.9 (1–3.6)	43	3,375	1.2 (0.8–1.7)	1.4 (0.8–2.3)
Medium	29	1,127	0.8 (0.5–1.4)	1.0 (0.6–1.8)	68	5,667	1.1 (0.8–1.6)	1.2 (0.8–1.7)
High	33	1,088	1 (ref)	1 (ref)	59	5,462	1 (ref)	1 (ref)
Income, age ≥ 65								
Low	115	3,809	0.8 (0.6–1.3)	0.9 (0.6–1.4)	212	18,828	0.9 (0.7–1.2)	0.9 (0.6–1.3)
Medium	55	2,082	0.7 (0.5–1.2)	0.8 (0.5–1.2)	111	10,384	0.9 (0.6–1.2)	0.9 (0.6–1.2)
High	28	788	1 (ref)	1 (ref)	49	3,927	1 (ref)	1 (ref)
Liquid assets, age < 65								
Low	28	814	1.3 (0.7–2.3)	1.2 (0.6–2.3)	51	4,081	1.3 (0.8–2)	1.3 (0.8–2.1)
Medium	40	1,291	1.2 (0.7–2.0)	1.1 (0.6–2.0)	76	6,486	1.2 (0.8–1.8)	1.2 (0.8–1.8)
High	19	716	1 (ref)	1 (ref)	35	3,602	1 (ref)	1 (ref)
Liquid assets, age ≥ 65								
Low	81	2,619	1.0 (0.7–1.4)	1.0 (0.7–1.5)	151	13,062	1.1 (0.8–1.4)	1.1 (0.8–1.5)
Medium	62	2,540	0.8 (0.5–1.2)	0.8 (0.5–1.2)	131	12,679	1.0 (0.7–1.3)	0.9 (0.7–1.2)
High	41	1,316	1 (ref)	1 (ref)	71	6,572	1 (ref)	1 (ref)

Table 6. Hazard ratio (HR) and adjusted HR (aHR) with 95% CI for any revision at 90 and 365 days in the years 2006–2017

Any revision	Short: 0–90 days				Long: 0–365 days			
	Events	Person-years	HR (95% CI)	aHR (95% CI)	Events	Person-years	HR (95% CI)	aHR (95% CI)
Cohabiting status								
Alone	403	4,679	1.4 (1.2–1.5)	1.3 (1.1–1.5)	543	21,924	1.2 (1.1–1.4)	1.2 (1.1–1.3)
Cohabitant	607	9,626	1 (ref)	1 (ref)	907	45,392	1 (ref)	1 (ref)
Education								
Low	425	5,917	1.1 (0.9–1.3)	1.1 (0.9–1.3)	606	28,121	1.1 (0.9–1.2)	1.1 (1–1.3)
Medium	425	6,245	1.0 (0.9–1.2)	1.0 (0.9–1.2)	628	29,245	1.0 (0.9–1.2)	1.0 (0.9–1.2)
High	181	2,765	1 (ref)	1 (ref)	264	12,859	1 (ref)	1 (ref)
Income, age < 65								
Low	49	416	2.5 (1.8–3.4)	2.1 (1.4–3.2)	60	2,004	1.7 (1.3–2.3)	1.6 (1.1–2.3)
Medium	72	968	1.6 (1.2–2.1)	1.4 (1.0–1.9)	98	4,668	1.2 (1.0–1.5)	1.2 (0.9–1.5)
High	155	3,283	1 (ref)	1 (ref)	271	15,441	1 (ref)	1 (ref)
Income, age ≥ 65								
Low	214	2,796	1.0 (0.9–1.2)	0.9 (0.7–1.2)	284	13,271	0.9 (0.8–1.1)	0.9 (0.8–1.2)
Medium	312	4,331	1.0 (0.8–1.1)	1.0 (0.8–1.1)	460	20,490	1.0 (0.9–1.1)	1.0 (0.9–1.2)
High	257	3,460	1 (ref)	1 (ref)	362	15,882	1 (ref)	1 (ref)
Liquid assets, age < 65								
Low	87	988	1.9 (1.4–2.5)	1.3 (0.9–1.8)	123	4,637	1.6 (1.3–2.0)	1.2 (0.9–1.6)
Medium	67	1,359	1.0 (0.8–1.4)	1.0 (0.7–1.3)	109	6,479	1.0 (0.8–1.3)	1.0 (0.7–1.3)
High	103	2,174	1 (ref)	1 (ref)	169	10,354	1 (ref)	1 (ref)
Liquid assets, age ≥ 65								
Low	263	2,954	1.4 (1.2–1.7)	1.3 (1.1–1.6)	352	13,873	1.3 (1.1–1.5)	1.2 (1.1–1.5)
Medium	204	3,017	1.1 (0.9–1.3)	1.1 (0.9–1.3)	294	14,229	1.0 (0.9–1.2)	1.1 (0.9–1.2)
High	278	4,376	1 (ref)	1 (ref)	412	20,557	1 (ref)	1 (ref)

Table 7. Hazard ratio (HR) and adjusted HR (aHR) with 95% CI for mortality at 90 and 365 days

Mortality	Short: 0–90 days				Long: 0–365 days			
	Events	Person-years	HR (95% CI)	aHR (95% CI)	Events	Person-years	HR (95% CI)	aHR (95% CI)
<b>Cohabiting status</b>								
Alone	432	7,976	1.8 (1.6–2)	1.4 (1.2–1.6)	974	39,100	1.7 (1.6–1.8)	1.3 (1.2–1.5)
Cohabitant	465	15,403	1 (ref)	1 (ref)	1112	75,626	1 (ref)	1 (ref)
<b>Education</b>								
Low	425	10,470	2.1 (1.6–2.6)	1.5 (1.2–2)	1009	51,642	1.7 (1.4–1.9)	1.2 (1–1.4)
Medium	252	8,888	1.4 (1.1–1.9)	1.3 (1–1.7)	574	43,426	1.1 (1–1.3)	1.0 (0.9–1.2)
High	75	3,789	1 (ref)	1 (ref)	215	18,421	1 (ref)	1 (ref)
<b>Income, age &lt; 65</b>								
Low	41	1,096	3.4 (2.2–5.1)	2.4 (1.4–4.2)	83	5,447	3 (2.3–4)	1.8 (1.2–2.7)
Medium	47	2,104	2.0 (1.4–3)	1.6 (1–2.5)	87	10,476	1.7 (1.2–2.2)	1.2 (0.9–1.7)
High	49	4,427	1 (ref)	1 (ref)	109	21,640	1 (ref)	1 (ref)
<b>Income, age ≥ 65</b>								
Low	483	6,652	3.1 (2.5–3.8)	1.9 (1.5–2.4)	1149	32,858	2.7 (2.4–3.1)	1.6 (1.4–1.9)
Medium	217	6,476	1.4 (1.1–1.8)	1.1 (0.9–1.4)	554	31,801	1.4 (1.2–1.6)	1.1 (0.9–1.3)
High	103	4,331	1 (ref)	1 (ref)	267	20,863	1 (ref)	1 (ref)
<b>Liquid assets, age &lt; 65</b>								
Low	41	1,817	5.5 (2.9–10.4)	3.7 (1.8–7.5)	82	8,948	4.0 (2.7–6)	2.6 (1.6–4.2)
Medium	20	2,668	1.8 (0.9–3.7)	1.3 (0.6–2.8)	59	13,217	1.9 (1.3–3)	1.3 (0.8–2)
High	12	2,919	1 (ref)	1 (ref)	33	14,358	1 (ref)	1 (ref)
<b>Liquid assets, age ≥ 65</b>								
Low	143	5,609	1.9 (1.4–2.5)	1.5 (1.1–2)	482	27,666	1.9 (1.6–2.2)	1.4 (1.2–1.7)
Medium	99	5,603	1.3 (1–1.7)	1.1 (0.8–1.5)	387	27,643	1.5 (1.3–1.8)	1.2 (1–1.5)
High	79	5,764	1 (ref)	1 (ref)	256	28,147	1 (ref)	1 (ref)

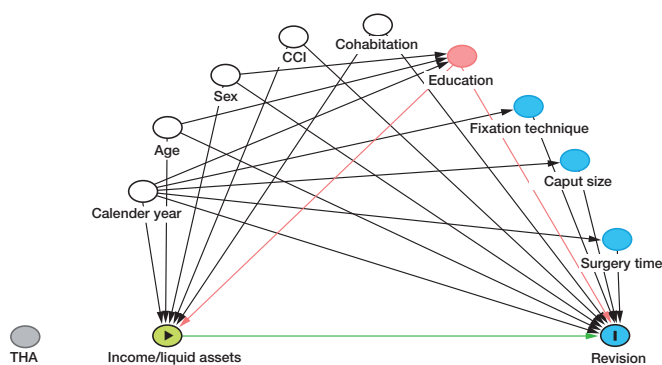


Figure 1. Directed acyclic graph.

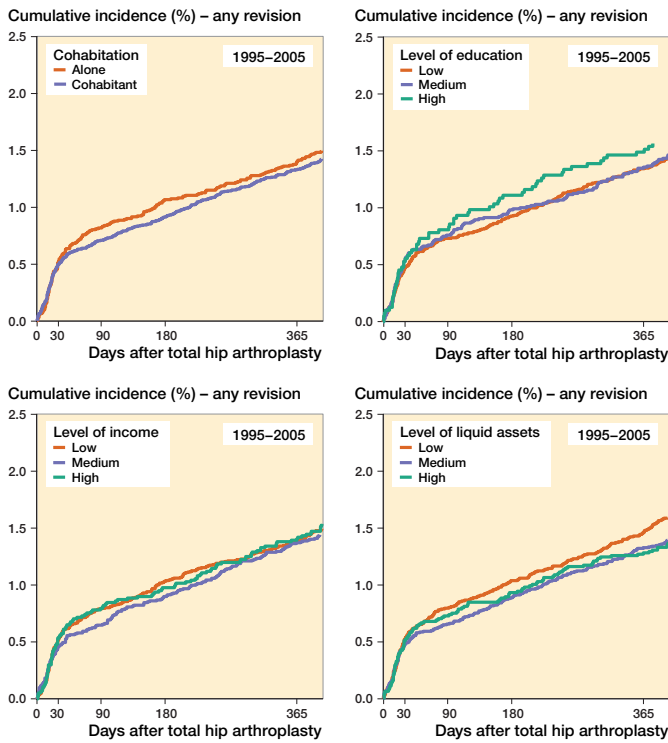


Figure 5. Cumulative incidence of revision for the 4 SES markers in the years 1995–2005

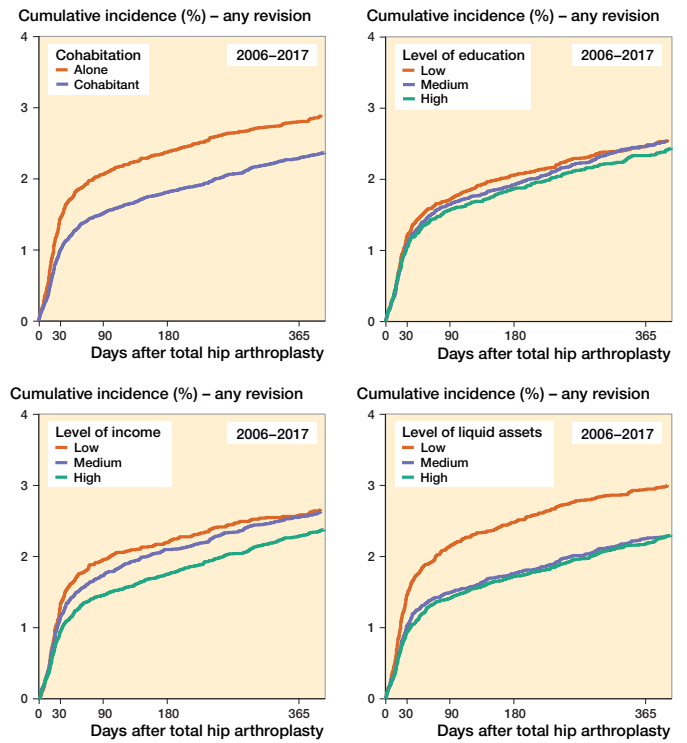


Figure 6. Cumulative incidence of revision for the 4 SES markers in the years 2006–2017.

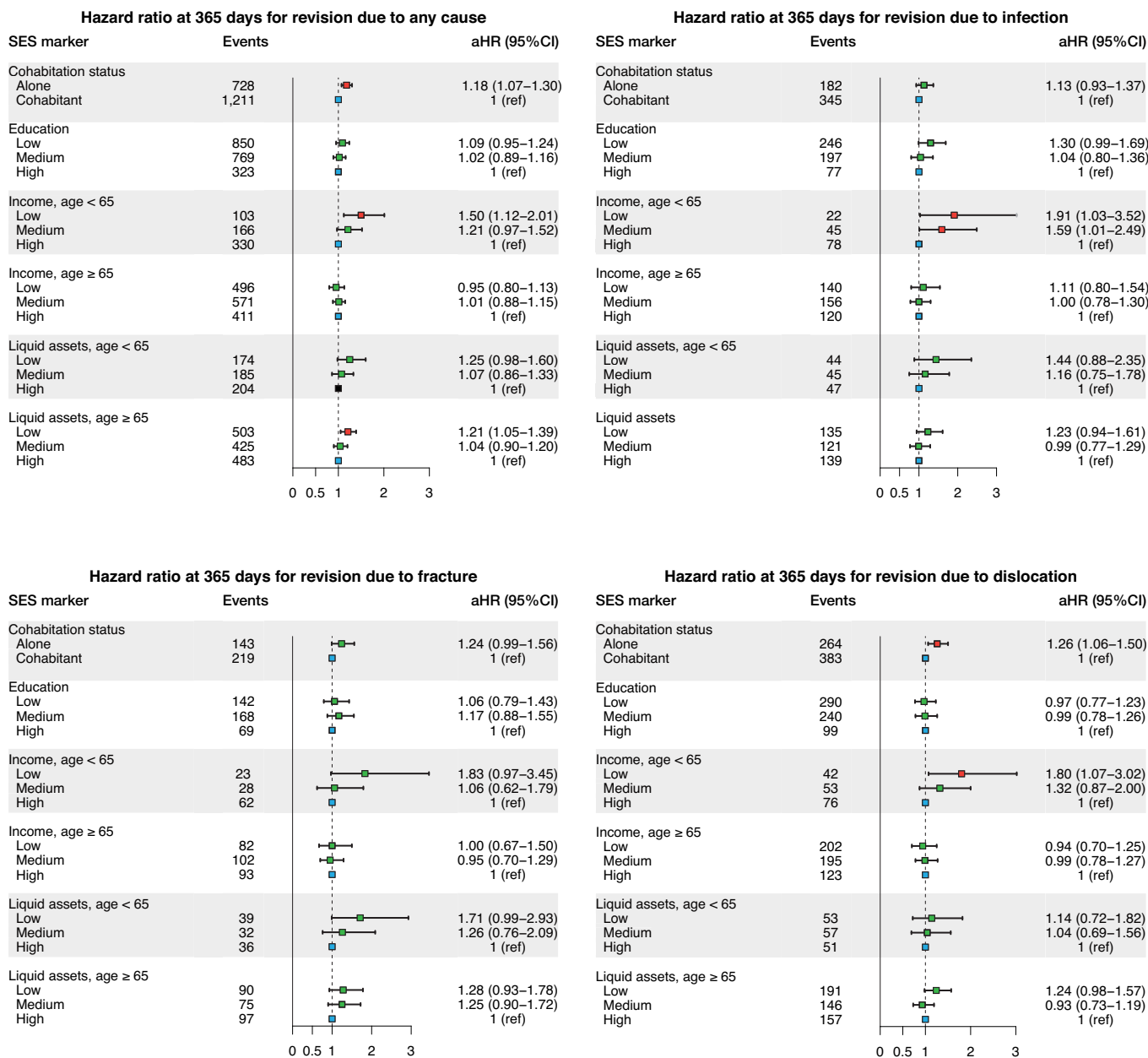


Figure 8. Hazard ratios for revision due to any cause, infection, fracture, and dislocation at 365 days. Hazard ratios are adjusted for age, sex, calendar year, and CCI. Income and liquid assets were also adjusted for cohabiting status.