

1 **AO-2024-67 - (17729) One-year results of lumbar spinal stenosis surgery in Finland**
 2 **a national FinSpine register study**

3 **SUPPLEMENTARY MATERIAL**

4 Table S1. Demographic details between the patients who answered and did not answer the PROM
 5 questionnaire preoperatively. The P-values are from Fisher's exact test (F), non-parametric bootstrap (B), or
 6 a chi-squared test (C) depending on the distribution of the variable. Values are count (%) unless otherwise
 7 specified

| Variable | | Respondent | Non-respondent | P value |
|------------------------------------|----------------------|------------|-----------------|------------|
| Total n, % | | 4,663 (54) | 4,011 (46) | |
| Age, mean (SD) | | 66 (11) | 70 (11) | <0.001 (B) |
| Female | | 2,653 (57) | 2,302 (57) | 0.7 (F) |
| BMI (SD) | | 28.4 (4.6) | 28.8 (4.4) | 0.3 (B) |
| Nicotine | | 640 (15) | 27 (17) (n=163) | 0.5 (F) |
| Pain duration | < 6 weeks | 108 (2.3) | 4 (5.1) | <0.001 (C) |
| | 6–12 weeks | 192 (4.1) | 6 (7.7) | |
| | 3–12 months | 1,221 (28) | 16 (21) | |
| | > 12 months | 2,794 (65) | 52 (67) | |
| Usage of pain medication | no/occasional | 1,644 (38) | 30 (41) | 0.7 (F) |
| | regular | 2,682 (62) | 44 (59) | |
| Employment status | working | 1,025 (23) | 10 (13) | <0.001 (C) |
| | unable to work | 457 (10) | 3 (3.8) | |
| | unemployed | 146 (3.1) | 2 (2.5) | |
| | retired | 2,771 (63) | 65 (81) | |
| LSS definition (spondylolisthesis) | Central canal < 3mm | 2,224 (48) | 2,178 (54) | <0.001 (C) |
| | Lateral recess < 3mm | 919 (20) | 660 (16) | |
| | Central canal > 3mm | 1,188 (25) | 949 (24) | |
| | Lateral recess > 3mm | 332 (6.9) | 224 (5.6) | |
| Other diagnoses | disc degeneration | 61 (1.3) | 30 (0.7) | 0.01 (F) |
| | disc herniation | 384 (8.2) | 313 (7.8) | 0.5 (F) |
| | other | 1017 (22) | 800 (20) | 0.03 (F) |

8

9

10 Table S2. Demographic details between the patients who answered and did not answer the PROM
 11 questionnaire 1 year postoperatively. The P values are from Fisher's exact test (F), non-parametric
 12 bootstrap (B), or a chi-squared test (C) depending on the distribution of the variable.

| Variable | | Respondent | Non-respondent | P value |
|------------------------------------|-----------------------|-------------|----------------|------------|
| Total n, % | | 3,301 (38) | 5,373 (62) | |
| Age, mean (SD) | | 67 (10) | 68 (10) | <0.001 (B) |
| Female | | 1,896 (57) | 3,059 (57) | 0.7 (F) |
| BMI (SD) | | 28.3 (4.7) | 28.6 (4.5) | 0.03 (B) |
| Nicotine | | 324 (13) | 343 (17) | <0.001 (F) |
| Pain duration | < 6 weeks | 59 (2.4) | 53 (3) | <0.001 (C) |
| | 6– 12 weeks | 109 (4.4) | 89 (5) | |
| | 3– 12 months | 709 (29) | 528 (28) | |
| | > 12 months | 1,597 (65) | 1,249 (65) | |
| Usage of pain medication | no/occasional | 982 (39) | 692 (36) | 0.03 (F) |
| | regular | 1505 (61) | 1,221 (64) | |
| Employment status | working | 570 (23) | 465 (24) | <0.001 (C) |
| | unable to work | 271 (11) | 189 (10) | |
| | unemployed | 72 (2.9) | 76 (4) | |
| | retired | 1612 (64) | 1,224 (63) | |
| LSS definition (spondylolisthesis) | Central canal < 3mm | 1522 (46) | 2,880 (54) | <0.001 (C) |
| | Lateral recess < 3mm | 621 (19) | 958 (18) | |
| | Central canal > 3mm | 893 (27) | 1,244 (23) | |
| | Lateral recess > 3mm | 265 (8.0) | 291 (5.4) | |
| Other diagnoses | disc degeneration | 47 (1.4) | 44 (0.8) | 0.009 (F) |
| | disc herniation | 275 (8.3) | 422 (7.9) | 0.4 (F) |
| | other | 762 (23) | 1055 (20) | <0.001 (F) |
| Preoperative PROM | ODI, % (SD) | 41.8 (16.4) | 43.7 (16.6) | <0.001 (B) |
| | ODI [CI] | [41.2–42.5] | [42.9–44.4] | |
| | VAS leg pain, % (SD) | 59.9 (27.7) | 65.6 (25.6) | <0.001 (B) |
| | VAS leg pain [CI] | [58.8–61.0] | [64.5–66.8] | |
| | VAS back pain, % (SD) | 56.0 (27.9) | 61.2 (26.3) | |
| | VAS back pain [CI] | [54.8–57.1] | [60.0–62.4] | |

13

14

15

16

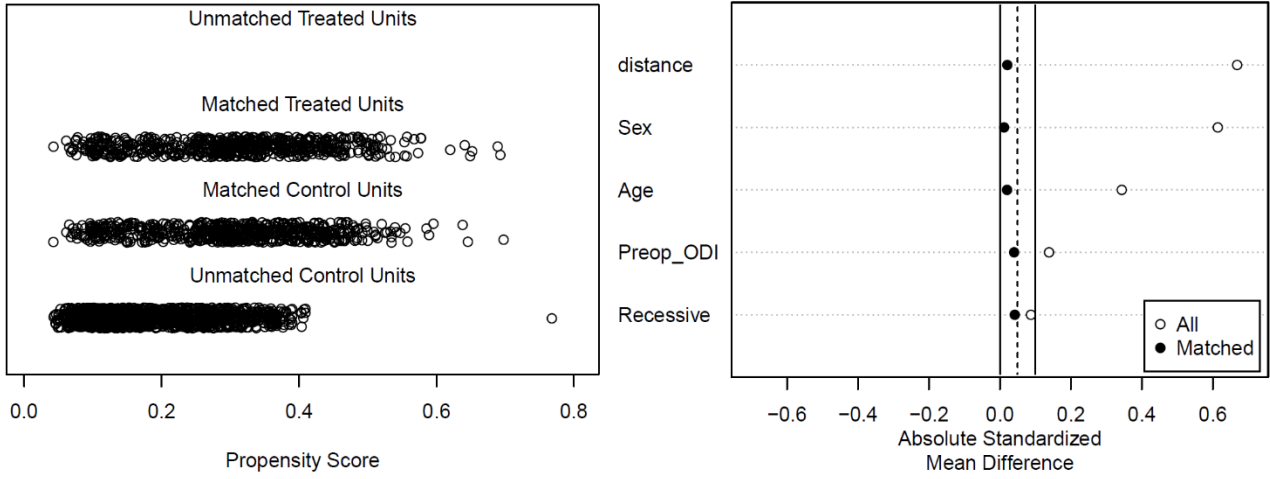
17

18

19 **Propensity score matching**

20

Distribution of Propensity Scores



21

22 Figure S1. Distribution of propensity scores for matched and unmatched decompression patients (Control)
23 and the distribution for the deco+fusion patients (Treated) [left panel] and the average distance measured
24 by generalized-linear-model-based propensity scores, and the standardized distances for the covariates
25 used in the matching: sex, age, preoperative ODI score, and recessive/central LSS.

26

27

28

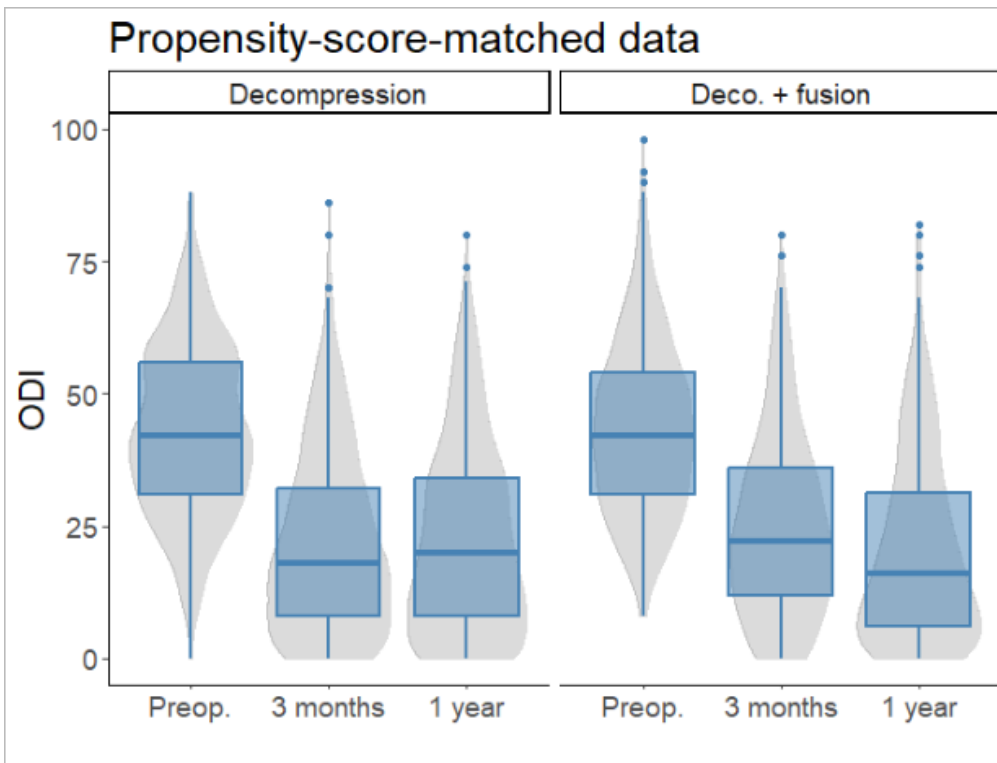
29

30

31

32

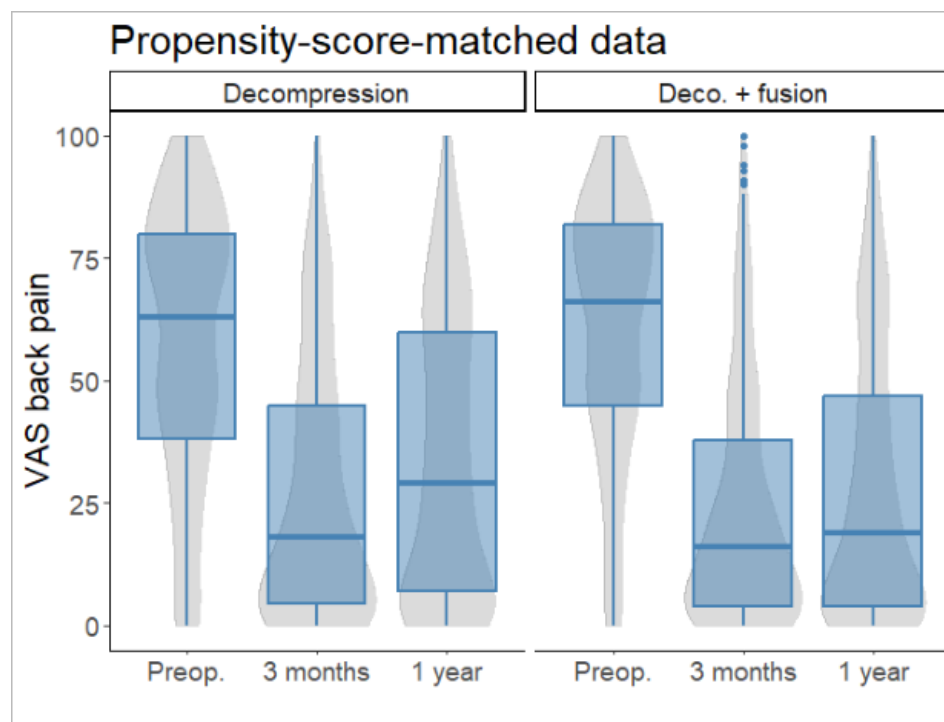
33



34

35 Figure S2. Patient-reported Oswestry Disability Index (ODI) values for lumbar spinal stenosis patients in the FinSpine-registry treated
 36 with decompression, and decompression and fusion (Deco. + fusion) for patients matched by propensity score matching.

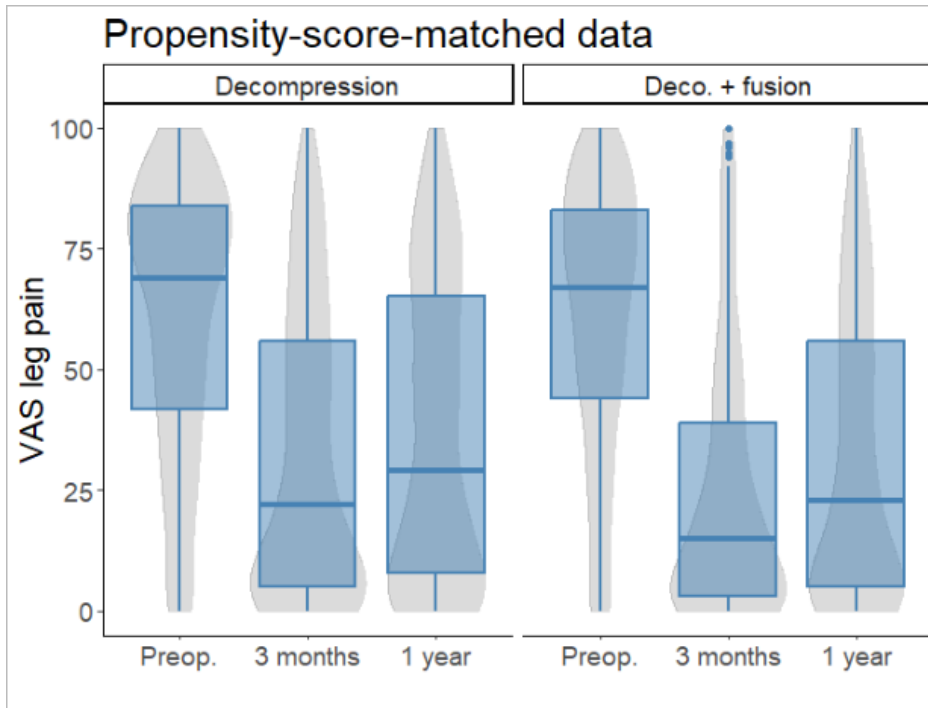
37



38

39 Figure S3. Patient-reported Visual Analogue Scale (VAS) values for lower back pain for lumbar spinal stenosis patients in the
 40 FinSpine-registry treated with decompression, and decompression and fusion (Deco. + fusion) for patients matched by propensity
 41 score matching.

42



43

44 Figure S4. Patient-reported Visual Analogue Scale (VAS) values for leg pain for lumbar spinal stenosis patients in the FinSpine-
 45 registry treated with decompression, and decompression and fusion (Deco. + fusion) for patients matched by propensity score
 46 matching.

47

48

49

50

51 Table S3. Sub-group analysis by stenosis type. Values are mean difference between preoperative and 1 year
 52 with (standard deviation) and [95% confidence intervals]

| | Central | | | Recessive | | |
|---------------|----------------------------------|----------------------------------|------------|----------------------------------|----------------------------------|----------|
| | Deco. | Deco. + fusion | P-value | Deco. (matched) | Deco.+fusion (full ODI) | P value |
| ODI | -20.2 (17.9) [-21.9 to -18.6] | -22.5 (18.2) [-24.1 to -20.8] | 0.07 (B) | -20.7 (18.4) [-23.6 to -17.9] | -23.9 (26.6) [-26.6 to -21.2] | 0.1 (B) |
| VAS leg pain | -23.5 (36.2) [-27.4 to -19.6] | -29.6 (36.5) [-33.3 to -26.0] | 0.02 (B) | -25.9 (35.3) [-32.1 to -19.8] | -27.5 (34.8) [-33.7 to -21.3] | 0.7 (B) |
| VAS back pain | -23.6 (33.5) [-27.0 to -20.2] | -33.2 (34.9) [-36.7 to -29.7] | <0.001 (B) | -26.1 (37.5) [-32.5 to -19.8] | -33.5 (29.4) [-38.8 to -28.3] | 0.07 (B) |

53

54

55

56

57 Table S4. Sub-group analysis for patients with < 3 mm spondylolisthesis. Values are mean difference
 58 between preoperative and 1 year with (standard deviation) and [95% confidence intervals]

| | Central < 3mm | | | Recessive < 3mm | | |
|---------------|----------------------------------|----------------------------------|---------|----------------------------------|----------------------------------|----------|
| | Deco. | Deco. + fusion | P-value | Deco. (matched) | Deco.+fusion (full ODI) | P-value |
| ODI | -18.9 (18.1) [-23.0 to -14.8] | -17.0 (20.0) [-21.5 to -12.5] | 0.6 (B) | -21.0 (19.5) [-28.3 to -13.8] | -23.1 (18.1) [-29.8 to -16.4] | 0.9 (B) |
| VAS leg pain | -24.9 (35.3) [-33.7 to -16.2] | -29.3 (41.9) [-39.8 to -18.8] | 0.5 (B) | -33 (39.8) [-49.7 to -16.4] | -31 (33.9) [-44.8, 17.1] | 0.8 (B) |
| VAS back pain | -24.9 (35.3) [-33.7 to -16.2] | -29.3 (41.9) [-39.8 to -18.8] | 0.3 (B) | -17.3 (38.4) [-33.1 to -1.6] | -40.8 (30.8) [-52.7, -29.0] | 0.01 (B) |

59

60

61

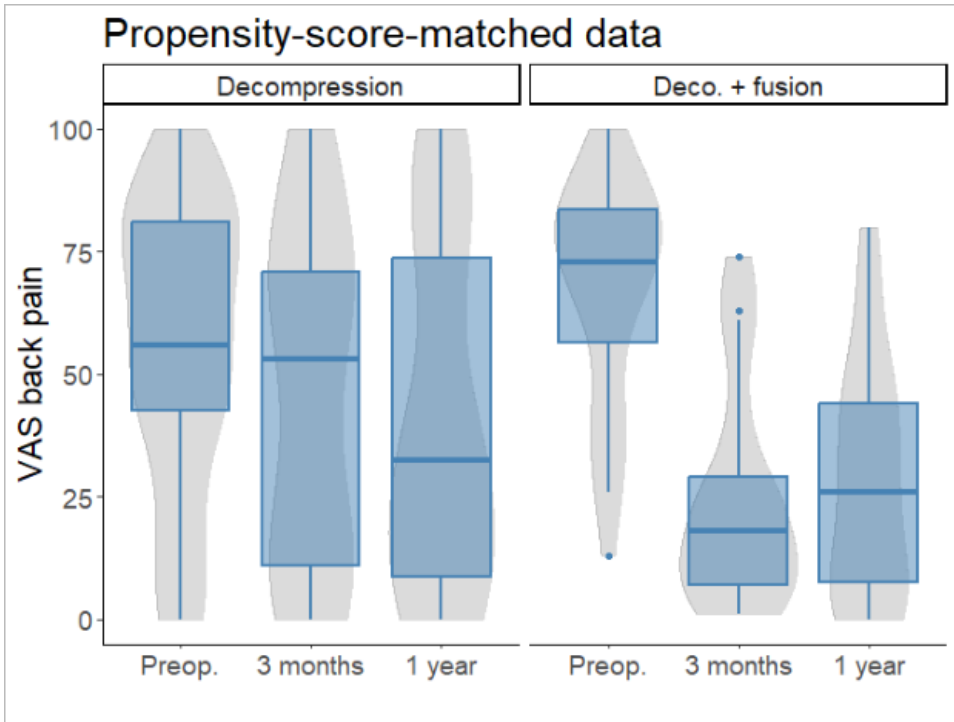
62

63

64 Table S5. Sub-group analysis for patients with ≥ 3 mm spondylolisthesis.

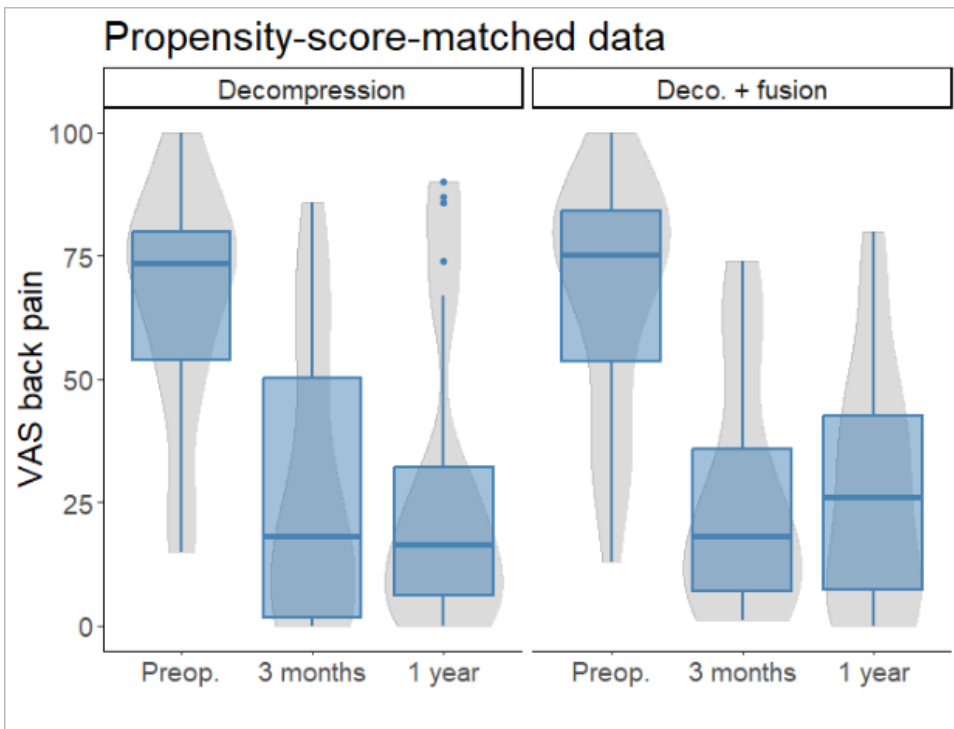
| | Central ≥ 3 mm | | | Recessive ≥ 3 mm | | |
|---------------|----------------------------------|----------------------------------|-----------|----------------------------------|----------------------------------|---------|
| | Deco. | Deco. + fusion | p-value | Deco. (matched) | Deco.+fusion (full ODI) | p-value |
| ODI | -19.7 (17.1) [-21.7 to -17.8] | -22.8 (18.1) [-24.8 to -20.7] | 0.04 (B) | -19.5 (19.8) [-23.6 to -15.3] | -23.7 (15.4) [-26.9 to -20.5] | 0.1 (B) |
| VAS leg pain | -25.4 (35.5) [-30.2 to -20.5] | -29.2 (36.2) [-33.7 to -24.7] | 0.2 (B) | -27.6 (35.3) [-36.1 to -19.1] | -26.1 (38.2) [-35.2 to -17.0] | 0.8 (B) |
| VAS back pain | -24.0 (33.2) [-28.4 to -19.7] | -32.3 (34.5) [-36.6 to -28.0] | 0.007 (B) | -29.0 (30.5) [-36.0 to -22.0] | -32.3 (28.7) [-39.2 to -25.4] | 0.5 (B) |

65



66
67 Figure S5. VAS back pain scores for recessive stenosis with <3 mm spondylolisthesis.

68



69
70 Figure S6. VAS back pain scores for recessive stenosis with < 3 mm spondylolisthesis when propensity score
71 matching uses preoperative VAS back pain score instead of preoperative ODI.